

10.00" - 14.00" Bore

Large Center Passageways

UEA designed this 10"-14" large bore for customers who need an extra large bore slip ring. Because we custom build UEA slip rings out of standard components, these UEA slip rings meet customers' demands for specific applications that require large center passageways, including storage silos, waste treatment facilities, custom machinery, machine tools and pedestal cranes.

Models: S100, S110, S120, S130, S140 (Custom Bore Sizes Also Available)

General Features

- Patented double pivot brush design
- Superior cleaning action
- High contact pressure
- Two copper graphite brushes/conductor minimum
- Copper alloy rings
- Temperature extremes: -40°F to 200°F (-40°C to 93.3°C)
- Corrosion inhibiting parts throughout

Unique Features

- 10 -15, 20, 30, 45, 75 - 600 Amperes/circuit, rated from 28 V-DC to 600 V-AC
- 20 rpm maximum rotational speed
- Minimum height design
- High quality Nylatron bearing and insulating components
- Large bore ID for liquid, gas and semi-solids passage

Dimensions for 10.00" - 14.00" Bores

- Diameter-20.00"
- Core lead extension 3" Standard. 'CL' beyond 'H' dimension depends upon number and type of core leads per customers specification.

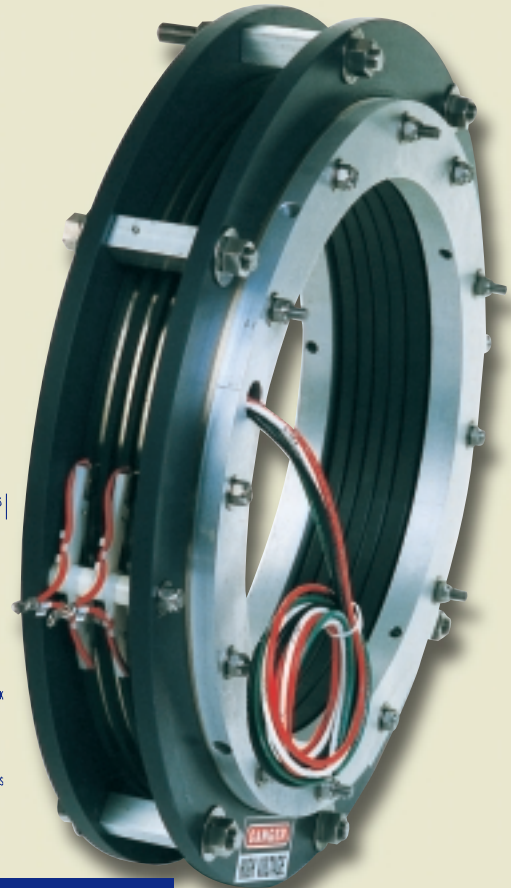
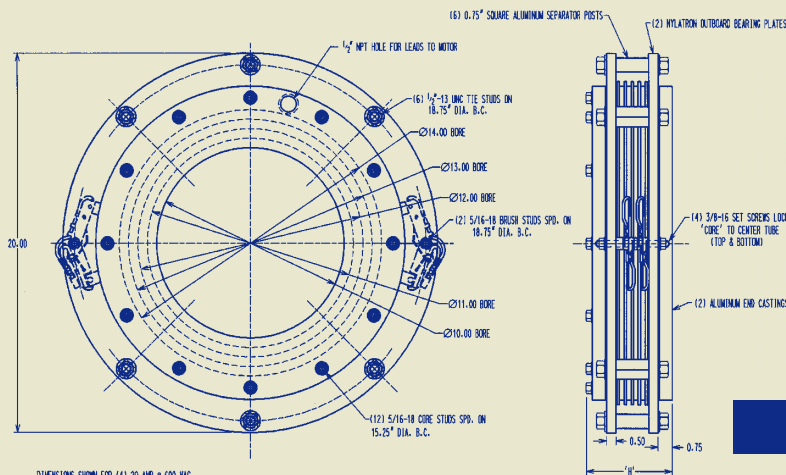
CORE HEIGHT CHART

Amperage	Voltage*	Core Hgt/Ckt** Inches
10-15	28,120	0.281 (7.14)
20	28,120	0.281 (7.14)
20	600	0.375 (9.53)
30-45	28,120	0.469 (11.91)
30-45	600	0.563 (14.30)
60-75	28,120	0.469 (11.91)
60-75	600	0.563 (14.30)
100-150	28,120	0.844 (21.44)
100-150	600	0.938 (23.83)
200-250	28,120	1.344 (34.14)
200-250	600	1.438 (36.53)
300-600	28,120	2.094 (53.19)
300-600	600	2.188 (55.58)

*28V-DC, 120V-AC, 220-600V-AC or V-DC

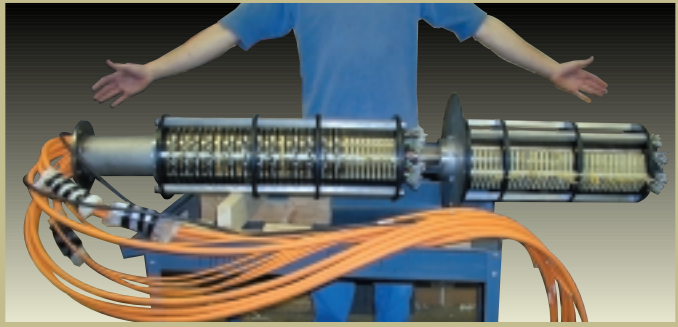
**tolerance 3%

Height: To determine 'H', add 3.06" (76.2mm) to total height of circuits required.



13" Bore

Special Rings



118 Conductor Slip Ring — One of our largest



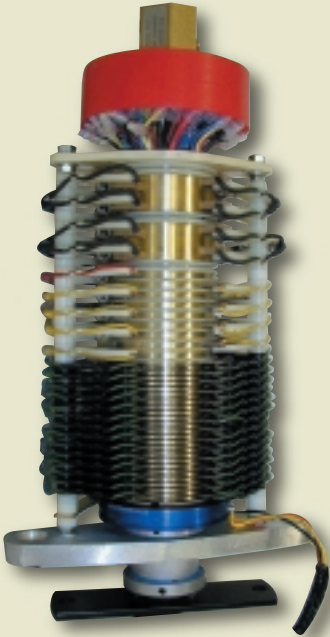
Potentiometer position sensing at top of slip ring

Meeting the Needs for Unique Applications

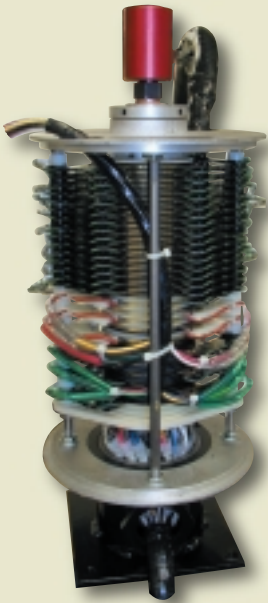
Special applications often call for special slip rings. By combining standard, off-the-shelf components into custom slip rings, UEA designs meet the design parameters and environmental conditions of the application. Here are some examples of special slip rings which were designed to be application specific.

Recent Special Ring requests which were built by UEA include:

- High Conductor Count rings were built to handle multiple functions
- Bore Sizes—built in conjunction with high conductor counts, these rings have bore sizes to accommodate special wiring, water hoses and hydraulic or pneumatic connections
- Unusual Environments—UEA has built special rings to be used in salt mines, outer space, frigid Alaskan climates and extreme desert heat
- Position Sensing—although this capability is usually provided only on smaller bore rings, UEA has the capability to offer position sensing on most slip ring models



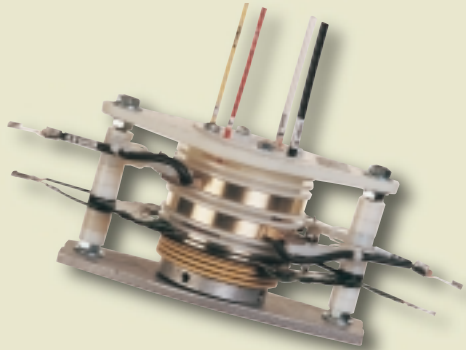
Electro-pneumatic swivel assembly with circuit combinations from high power to control. Includes potentiometer position sensor at base of slip ring



Pre-wired power and control combination assembly with integral 1/2" pneumatic line. Up to 1.00" air line available



Piggyback 4.00" & 1.50" slip ring with power & control circuits located in 4.00" ring. Electronic control in enclosed 1.50" ring



S150 for high temperature—used in laminating equipment