

.500" - 1.00" Bore

Power in a Small Unit

The smallest UEA Slip Ring is designed for applications requiring few conductors with higher power needs. Its compact diameter facilitates higher current requirements in a limited space.

General Features

- Patented double pivot brush design
- Superior cleaning action
- High contact pressure
- Two copper graphite brushes/circuit
- Copper alloy rings
- Temperature extremes, -40°F to 200°F (-40°C to 93.3°C)
- Corrosion inhibiting parts used throughout
- Brass set screw connectors for easy center harness attachment
- Optional pre-wired harness(es) and mounting tubes

Unique Features

- ID .500 to 1.00" (12.7 - 25.4mm)
- One to 50 circuits
- Rated to 40 amperes/circuit at 28 V-DC up to 600 V-AC
- Multiple combinations of amperage & voltage
- 150 RPM rating
- Multiple enclosure options: PVC or aluminum enclosure materials
- Standard copper graphite conductors
- Optional silver low-level signal conductors
- Smaller O.D. for limited space applications

CORE HEIGHT CHART

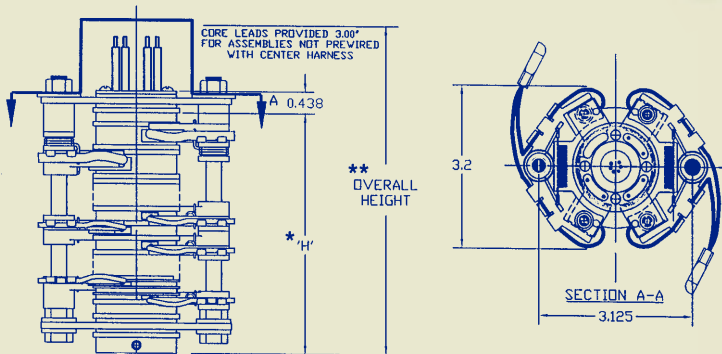
Amperage	Voltage*	Core Hgt/Ckt** Inches (mm)
7.5 silver	28	0.134
7.5	28	0.134
7.5	120	0.249
7.5	220-600	0.353
10-20	28	0.281
10-20	120-300	0.396
10-20	600	0.500
40	28	0.469
40	120-300	0.584
40	600	0.688

*28V-DC, 120V-AC, 220-600V-AC

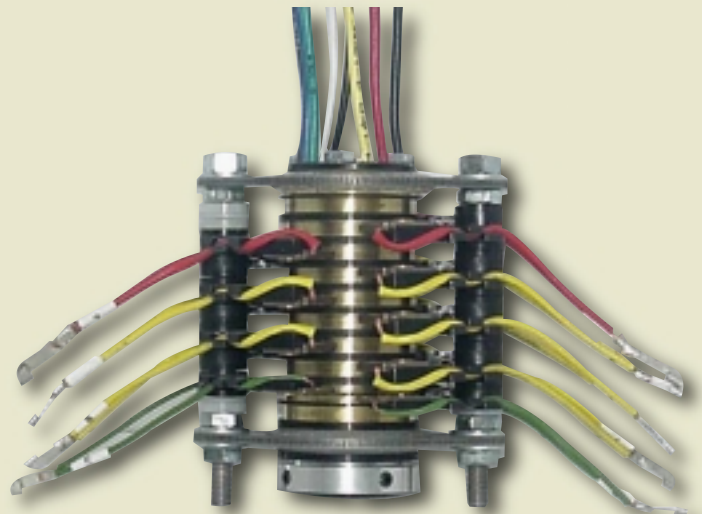
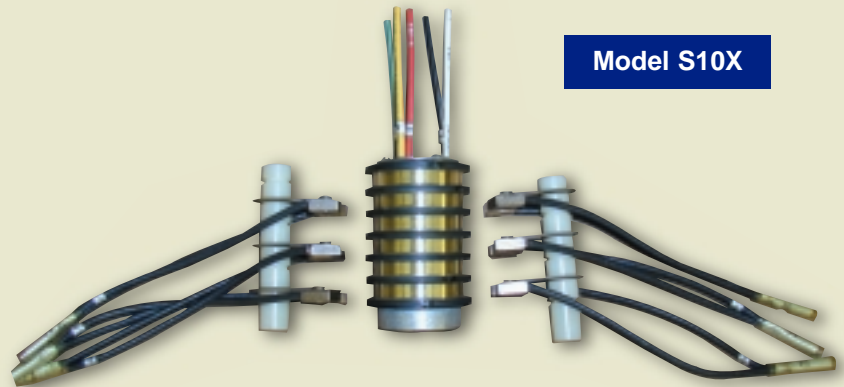
**tolerance 3%

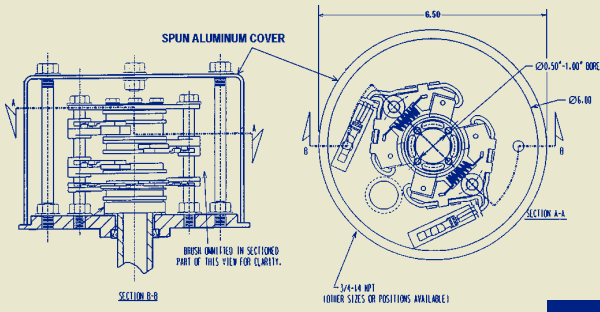
**Overall Height=H+0.656+(wire make-up)

*'H' Height=.91"+Total height of circuits required using core height chart

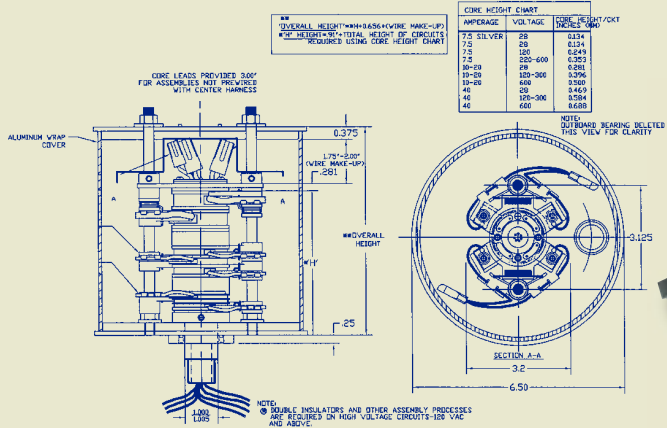
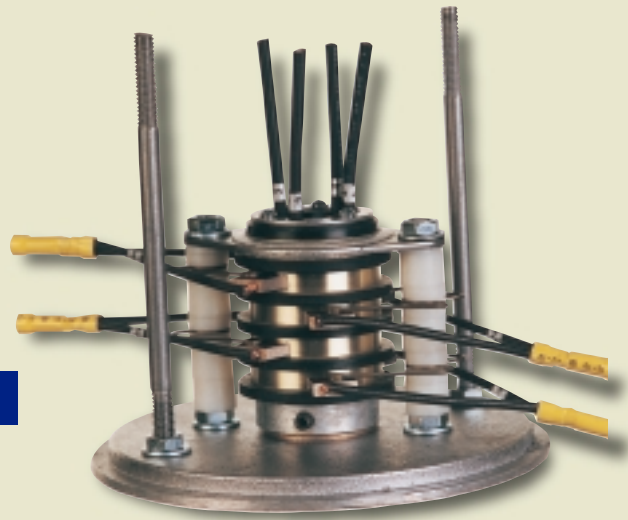


NOTE:
* DOUBLE INSULATORS AND OTHER ASSEMBLY PROCESSES ARE REQUIRED ON HIGH VOLTAGE CIRCUITS-120 VAC AND ABOVE.





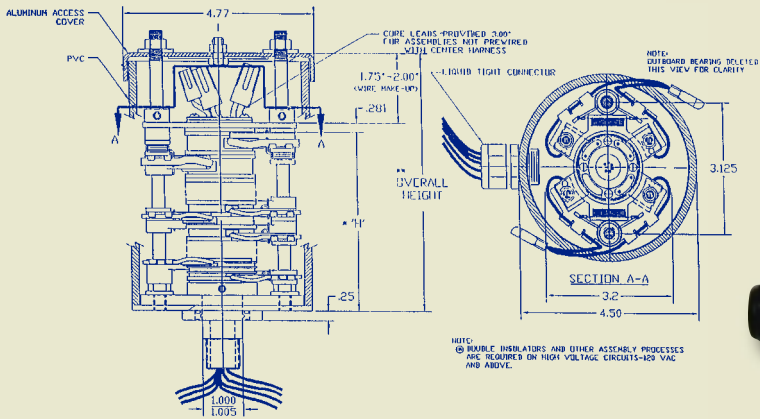
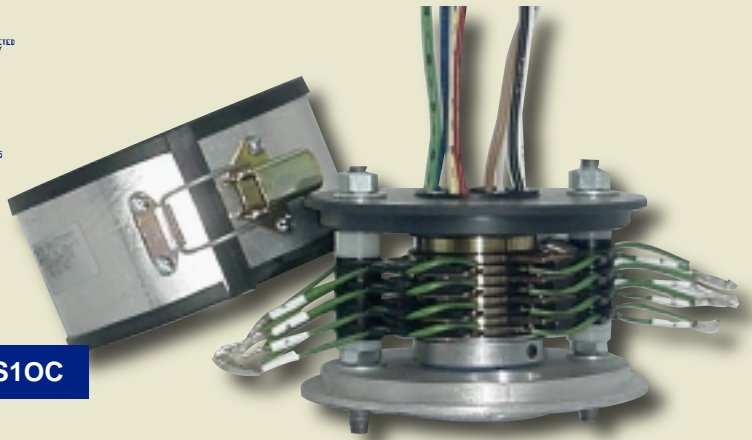
Model S10A



CORE HEIGHT CHART		
AMPERAGE	VOLTAGE	CORE HEIGHT (INCHES)
7.5 SILVER	25	0.134
7.5	25	0.134
7.5	120	0.249
7.5	250-600	0.282
30-50	25	0.282
30-50	120-300	0.296
30-50	400	0.300
46	20	0.469
46	120-300	0.584
46	600	0.638

6.50" O.D.

Model S10C



Model S10E

